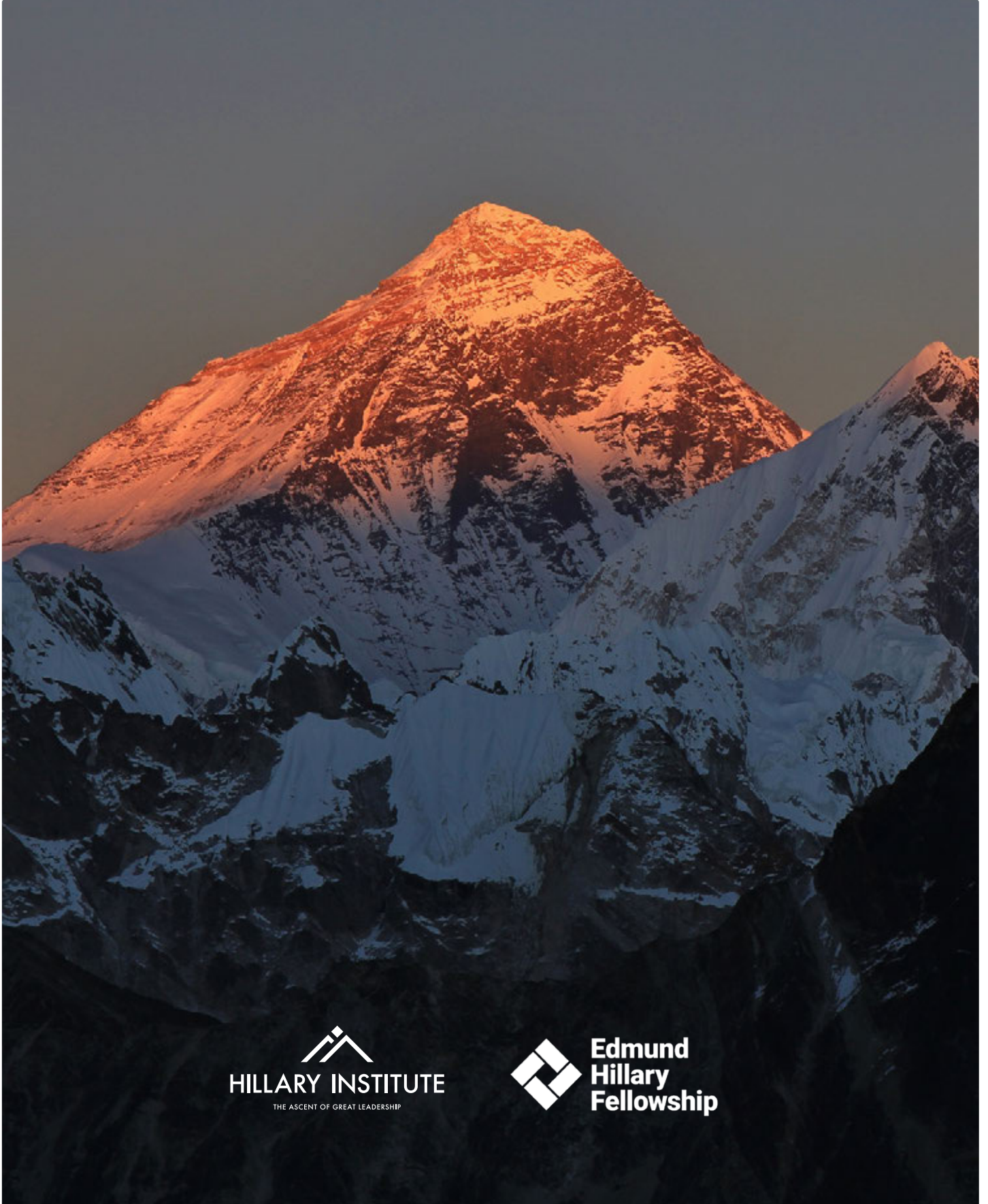


ANNUAL REPORT

2022 / 2023



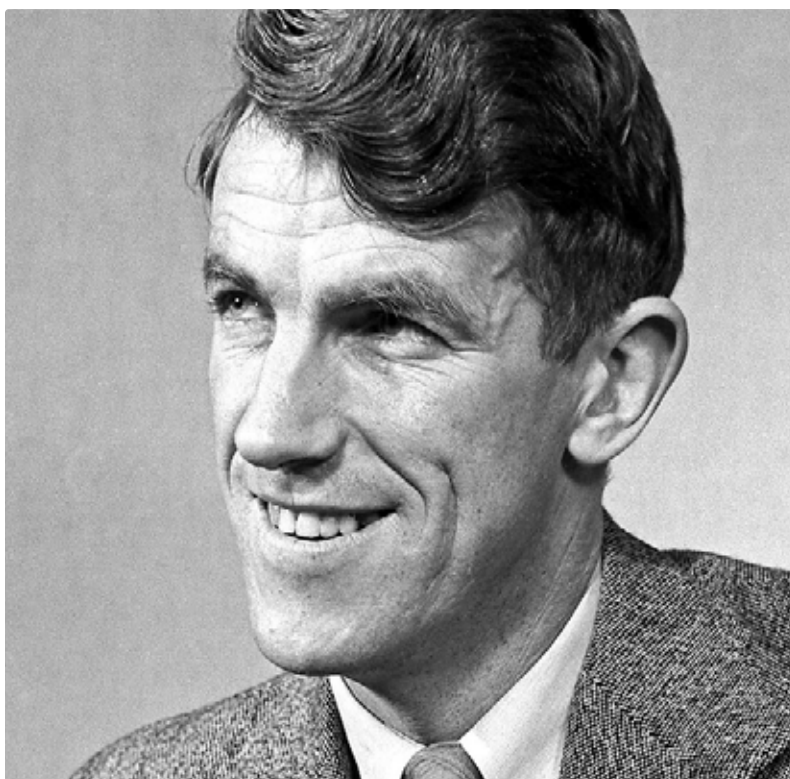

HILLARY INSTITUTE
THE ASCENT OF GREAT LEADERSHIP


**Edmund
Hillary
Fellowship**

CONTENTS

Foreword	2
From the Chair	2
From the CEO	4
From the Institute Founder & Kaitiaki	6
Hillary Institute	8
A Review of 2022/23	8
Laureate Achievements & Highlights	10
Edmund Hillary Fellowship	14
A Review of 2022/23	14
Delivering impact for Aotearoa New Zealand 2022/23	15
EHF Fellow Highlights & Achievements	20
Fellows' Impact Snapshots	24
How EHF Supported Fellows in 2022/23	28
EHF in Numbers	31
How EHF Delivered for the Fellowship	32
The Board and Institute Founder	34
Management	34
Patron and Governors	35
Hillary Laureates	36
EHF Fellows	36

GREAT LEADERSHIP CHANGES THE WORLD FOR THE BETTER



SIR EDMUND HILLARY personifies the essential human qualities of integrity, modesty, determination and service to others born of a life-time of exceptional achievement. He was raised in a quiet country town in New Zealand, and as an unremarkable schoolboy, he discovered a love for mountaineering early on. This passion ultimately led to him becoming an international legend as the first man to climb Mount Everest in May 1953, alongside Sherpa Tenzing Norgay.

In the following 50 years he continued to lead expeditions to the most remote corners of the earth, but perhaps most tellingly, he devoted himself to environmental and humanitarian efforts that have made a profound difference to the Sherpa communities where his famous summit climb was achieved.

In 2003, Sir Edmund and Lady June Hillary celebrated the 50th Anniversary of the ascent of Everest in Nepal, with Sherpa friends and the Tenzing family. In 2005, he formally re-embraced leadership development as the patron of the Exceleator: New Zealand Leadership Institute, and internationally through lending his name to the development of the Hillary Institute and its associated Laureate programme.

Knighted by Queen Elizabeth II in 1953, Sir Edmund was the recipient of numerous international citations including The Order of New Zealand, the country's highest honour. He was awarded nine honorary doctorates and authored eight books. In January 2007, Sir Edmund returned to Antarctica for the final time for the 50-year celebration of his establishment of Scott Base for New Zealand. With Sir Edmund in honoured attendance, Prime Minister Helen Clark (as Patron) formally launched The Hillary Institute there on 22 January 2007. New Zealanders take great pride in this extraordinary, ordinary man, a world-wide symbol of courage, determination, leadership and humanitarian service. Sir Edmund passed peacefully in Auckland on the morning of 11 January 2008, and was accorded the rare honour of a state funeral on 22 January. 2019 was the centenary of his birth – a true legend who will forever be an inspiration to us all. The 70th Anniversary of Sir Edmund Hillary's and Tenzing Norgay's ascent of Mount Everest was marked on 23 May 2023 – a momentous occasion that was celebrated by Aotearoa New Zealand and communities around the world, including the Hillary Institute and Edmund Hillary Fellowship community who reflected on his values, achievements and legacy.

For a full biography of Sir Edmund Hillary visit www.hillaryinstitute.com

FOREWORD



FROM THE CHAIR

Ko te pae tawhiti, whāia kia tata; koe te pae tata, whakamaua kia tīna
Seek out distant horizons and cherish those you attain

The 2022/23 year has been a year of great momentum for the Hillary Institute and Edmund Hillary Fellowship (EHF), and one of significant impact by our community of Hillary Laureates and EHF Fellows.

At the 'New Expedition for Global Impact' event in February this year, I shared our wero (challenge) of bringing together two global networks who have already created enormous change as individuals, so they can catalyse even greater impact for Aotearoa New Zealand and the world. Our vision is to deliver extraordinary solutions for extraordinary challenges, and aligns with our mātāpono (principles) of the EHF Constitution.

The work of our Laureates is deeply important for understanding the context we are operating in globally and we continue to engage deeply with Laureates to amplify their work and explore models of collaboration that enable impact at scale.

Building on foundations previously laid, we completed the transition of the two organisations to a more integrated management structure. We have also continued to activate the Fellowship, by providing the systems, tools and resources to connect and induct our Fellows into Aotearoa NZ's communities, businesses and

sectors, and to develop their understanding of Te Tiriti o Waitangi (the Treaty of Waitangi) and te ao Māori (Māori world view). And we have delivered this in a way that is being recognised as a unique and leading practice in the investment and immigration sectors.

We have now successfully completed the Global Impact Visa programme, delivering unparalleled outcomes – a committed international community of 500+ innovators, entrepreneurs and investors, delivering significant economic benefit for Aotearoa NZ, and addressing inequalities among our communities of place and interest. Combined with our 11 outstanding global Laureates, who are shaping systems and forging new models, we are focused on propelling impact at scale for Aotearoa NZ and beyond.

We were honoured to have our iwi partners Te Āti Awa Taranaki Whānui stand with us at our February event, as we reflected on the past to look to the future. We are incredibly grateful for the support, wisdom and generosity that Kura Moeahu and Te Āti Awa whānau have shared with us through the year. For the year ahead, the Board is committed to integrating Te Tiriti o Waitangi in our governance and operations, including how we honour and partner with



MĀTĀPONO (PRINCIPLES) OF THE EHF CONSTITUTION

- **Respecting Te Tiriti o Waitangi (the Treaty of Waitangi) as the founding constitutional document of Aotearoa New Zealand;**
- **Respecting the cultural diversity of people and communities;**
- **Inspiring and enabling people and communities to reach their full potential and take ownership of their future; and**
- **Enabling positive social changes by building communities to create sustainable positive outcomes.**

Photo supplied by EHF Fellow Joseph Michael

Te Āti Awa Taranaki Whānui, and how we support Māori innovators and entrepreneurs in their mahi (work). New voices have joined the governance of the organisation, with the appointment of trustee/director Ian Short in November 2022, and the recent appointment of Dinnie Moeahu in August 2023. Both Board members have brought extensive governance experience, wide-reaching networks, and a strong commitment to honouring Te Tiriti o Waitangi. With their wealth of experience, and strategic and cultural capabilities, Ian and Dinnie are helping strengthen the work of the Hillary Institute and EHF for the benefit of Aotearoa NZ.

At the end of the financial year we farewelled Sacha McMeeking. Sacha has been tireless and selfless in her contribution to both the Hillary Institute and the Edmund Hillary Fellowship for more than 10 years. She is an extraordinary individual, and as with all former Board members, Chairs, and Hillary Summit Governors, Sacha is a treasured member of the Hillary Institute and EHF whānau. The Board and I would also like to acknowledge our Hillary Institute Patron, former Prime Minister Rt Hon Helen Clark, our Hillary Summit Governors, and Lady June Hillary and the Hillary Family. We have appreciated

the ongoing support, interest and engagement with Peter, Sarah and Alex Hillary through the year, as we honour and celebrate Sir Edmund Hillary’s tremendous legacy. Continuing to guide and advise, our wonderful Kaitiaki/Guardian Mark Prain has been a strong pou (pillar) supporting the Board and our strategic direction. We are incredibly grateful for everything he has contributed this year.

It is a privilege to share this report featuring the outstanding work of Laureates and Fellows in the year celebrating the 70th Anniversary of Sir Edmund Hillary and Tenzing Norgay summiting Everest. This accomplishment – and Sir Edmund Hillary’s humanitarian achievements – continue to inspire people around the world every day, including our Hillary Laureates and Edmund Hillary Fellows, who carry not just the name, but the spirit of service and sheer perseverance.

Anna Kominik
Chair, Hillary Institute and Edmund Hillary Fellowship



FROM THE CEO

This year we welcomed over 200 global changemakers into Aotearoa New Zealand and the Fellowship. Many of them are celebrated leaders and market makers who have founded technologies or movements with global impact. This includes amazing Kiwi Fellows who have staggering success stories at home, and on the global stage. All bringing valuable entrepreneurial skills, creativity, connections and resources in service to Aotearoa NZ. It has been encouraging to see Fellows' momentum in support for Kiwi-founded businesses and our innovation ecosystem. Our latest impact survey shows in 2022/23, Fellows have connected Kiwi businesses into over \$312m of investment – up \$73m from the previous year – and directly invested \$114m into at least 146 NZ ventures, more than five times the investment in 2021/22. In New Zealand, they have created over 100 new businesses, generated hundreds of jobs and made more than \$45.5m in salary payments for the year, over double the amount paid in 2021/22. This only scratches the surface of the economic impact that is being created. Fellows are also creating meaningful social and environmental impact as featured in this report.

A supporting foundation for Fellows' impact has been their induction to Aotearoa NZ. This year we held three multi-day Welcome Experiences where Fellows came together through whakawhanaungatanga (process of building relations), connecting through their whakapapa (genealogy). They learned how Aotearoa NZ is a bi-cultural nation with a multicultural society, and what it means to be Tangata Tiriti (People of Treaty): many described this as a 'life changing' experience that shifted mindsets and their approach to work.

This deep learning journey was made possible by our iwi partners, Te Āti Awa Taranaki Whānui. We have been honoured by their incredible generosity and grace welcoming Fellows, gifting the name of each group, and guiding our journey. This mauri (energy) was carried by facilitators Mikaere Paki and Sharn Maree who guided Fellows through their Welcome Experience with such wisdom and care, supported by the incredible EHF team and wider whānau.

And so connections deepened into friendships. New collaborations were sparked. Established Fellows welcomed those newly arrived, opening homes and linking them with local ecosystems. Working with partners across the country, we organised and supported satellite events – regional roadshows, business days, networking events – creating connections and a sense of welcome to regions, sectors and communities.

It was also a year of connection with our Hillary Laureates, our community of global transformative leaders. I had the privilege of travelling with Founder and Kaitiaki Mark Prain to meet Laureates and Hillary Summit Governors as I formally picked up the baton of service to the Hillary Institute. What struck me was the humanity, courage and 'stubborn' optimism of each and every Laureate, and I often reflect on Christiana Figueres' quote: "Stubborn optimism needs to motivate you daily; you always need to bear in mind why you feel the future is worth fighting for". (From her book, *The Future We Choose: Surviving the Climate Crisis*.)

Laureates and Fellows, while diverse communities, converge around a common purpose – to address the world's toughest challenges and transform systems.



CEO Rosalie Nelson speaking to EHF Fellows at a Welcome Experience. Photo by Erica Austin, Peanut Productions.

This sparked the development of The Mission Studio, which we announced in February 2023. In the case of climate innovation, our first mission, we face complex and interconnected systemic challenges. No single organisation, government or individual holds the answer. That is why collaboration is at the heart of The Mission Studio and why this year we are focused on building a community of action that collectively drives levers for change.

So our next chapter has one focus: unlocking the full potential of Fellows and Laureates for Aotearoa NZ and the world.

This year we will continue to build engaged and committed communities, establish strategic partnerships to connect the innovation ecosystem with Fellows, and support Fellows in their work – building new transformative businesses, investing in innovation growth, addressing inequalities, redesigning systems, and elevating community-based initiatives. We will take our Mission Studio design into pilot stage, to understand the power and potential of mission-led innovation that can, over time, shift systems.

I am extremely grateful for the Board’s support, Mark’s wisdom as Kaitiaki, our partners’ contributions and engagement, and the committed EHF team, which has grown and flourished this year. And I am constantly inspired by the phenomenal contribution of Laureates and Fellows to Aotearoa NZ, our people and planet, and what we can build together.

Rosalie Nelson

CEO – Hillary Institute and Edmund Hillary Fellowship



FROM THE INSTITUTE FOUNDER & KAITIAKI

The 2022/23 year has been underscored by themes of celebration, growth and new connections. It was an honour to meet with and celebrate our 11th Hillary Laureate, Vanessa Nakate, alongside CEO Rosalie Nelson in New York last September. Vanessa's accomplishments in championing climate action and climate justice for front-line communities and the global south are deeply impressive and special, not least given she is in her 20s. Her passion and conviction in the public eye echoes the 10 global Laureates who have come before her, as well as the voice and values of the late and great Sir Edmund Hillary, the Institute's namesake.

Hillary Laureates' continuous resolve on climate action with courage, deep humanity and steely urgency is inspirational. Similar qualities and dedication to impact I have seen from EHF Fellows attending their Welcome Experiences during the year. There is much synergy between Laureates and many Fellows: shared values of service, commitment to Papatūānuku (Earth) and tangata (people), and having stepped away from operations and into my role as Kaitiaki, I have been delighted to support our strategic intent of drawing together Laureates and Fellows as a win-win.

Over the years I have seen several organic and pragmatic connections made. For example, Laureate Johan Rockström's book *Breaking Boundaries: The science behind our planet*; edited by Fellow Owen Gaffney and illustrated by Fellow Félix Pharand-Deschênes (also illustrating our forthcoming Laureate book). More recently I was delighted to see Laureate Christiana Figueres and Fellow Matthew Shribman together in

Detroit, Christiana's commitment to generational equity a crucial part of her story.

Alongside the kōrero (discussion) that Rosalie and I continued with Laureates after our travels last year, we have heard from Fellows that their desire for cross-collaboration is real and potentially compelling. A 'new narrative' on regenerating our planet can spring from organic Laureate-Fellow connections, and impact at scale can be catalysed from intentional and curated, radical collaborations.

This year has allowed me to explore themes, which were expected, and nuances which were unexpected, for our upcoming book on the 11 Hillary Laureates, including how they inspire agency and 'stubborn optimism' by taking action. I have been privileged to richly re-engage as I re-visit their unique climate journeys, humanity and leadership stories. These deep conversations, and associated research, have felt particularly poignant given the 70th Anniversary of Sir Edmund Hillary and Tenzing Norgay reaching the summit of Mt Everest. The human and environmental challenges our Laureates continue to face – at times seem insurmountable, not dissimilar to the world's tallest mountain. Their unfaltering, passionate service to people and planet, remains both an inspiration and a wero (challenge) to unlock the Hillary Step in us all.

Mark Prain

Hillary Institute Founder and Kaitiaki/Guardian



I orea te tuatara ka patu ki waho

A problem is solved by resolutely finding solutions

HILLARY INSTITUTE

A REVIEW OF 2022/23

The 2022/23 year was a refreshing return to in-person events and face-to-face connections for the Hillary Institute and Laureates. It was also a formative year as the Hillary Institute and EHF drew closer together in function and focus, with the transition to a unified structure completed on 1 September 2022¹. The closer alignment is intended to unlock the potential of two extraordinary groups – Hillary Laureates and EHF Fellows – to create impact at a larger scale, around some of our toughest global challenges, such as climate change.

The following is a series of highlights and achievements during the year.

In May 2022, the Hillary Institute announced and celebrated Vanessa Nakate as its 11th Hillary Laureate. News of the recognition was shared during a panel session that Vanessa was part of, hosted by the Associated Press and New York Times – one of her several speaking engagements at the World Economic Forum in Davos, Switzerland.

In September, Founder and Kaitiaki Mark Prain and CEO Rosalie Nelson travelled to the US to connect with Laureates and Hillary Summit Governors. Timed with Climate Week in New York, Rosalie and Mark met with Vanessa to deepen their understanding of how the Hillary Institute could support her work. They also presented her with a pounamu (greenstone carving) in recognition of her becoming a Hillary Laureate.

With Christiana Figueres (2020), Mark and Rosalie explored the challenges of the current and often disempowering discourse around climate change and the need to amplify ‘hope, agency and inter-generational action’ into the climate narrative. Drawing from this and many other kanohi ki te kanohi (face to face) Laureate conversations,

Mark is carrying through this theme of ‘a new narrative’ in the book he is writing on the 11 Hillary Laureates from 2009–2022.

Spending time with Megan Fallone (2018), Atossa Soltani (2013) and Peggy Liu (2010), Rosalie and Mark discussed different leadership approaches, powerful solutions that lie within indigenous knowledge, and the importance of visioning, such as the movement: *Amazonia 2041: Vision the Future*.

Also during their US trip, they met with former Executive Director of Sierra Club and Hillary Laureate (2014) Mike Brunne, and discussed his interest in a lower energy blockchain model and subsequently connected him to EHF Fellows who are energy and blockchain specialists. They also visited or directly updated a number of Hillary Governors, Dr Helen Sykes (Melbourne), Simon Walker (UK), Manfred Kets De Vries (Paris) and Jim Armstrong (New York), discussing opportunities and alignment of Hillary Institute and EHF.

At the Villars Institute in Switzerland, Rosalie and Mark explored knowledge-sharing opportunities with Lee Howell, Executive Director at Villars Institute, with whom the Hillary Institute shares similar values around celebrating and nurturing a new generation of transformational leaders.

In October the Hillary Institute and EHF team maximised having Aimée Christensen in Aotearoa New Zealand for the inaugural 2035 Oceania Summit where she delivered a keynote address. The team facilitated meetings with New Zealand energy and business leaders, and the Minister of Research, Science and Innovation, with whom she shared her experience and insights on private/public partnerships and innovative climate solutions. *Also see page 12.*

Our mission is to recognise, reward and nurture great leaders currently in play, who will provide answers to such challenges as climate change, poverty, disease, peace and justice.

When environmental and humanitarian crises can seem as insurmountable as the first summiting of Everest, the Hillary Institute exists to inspire through its Laureates, each of us to put our full potential to work in service of our planet and, in so doing, unlock the Hillary Step in us all.

¹ Rosalie Nelson became CEO of the Hillary Institute on this date



2018 Hillary Laureate Meagan Fallone at the New Expedition event. Photo by Sonia Yoshioka Braid.

UNLOCKING THE POTENTIAL OF TWO EXTRAORDINARY GROUPS

The New Expedition event in February 2023 was a significant milestone for the Hillary Institute and EHF. Board Chair, Anna Kominik, reflected on the organisation’s first two chapters: the selection and celebration of 11 remarkable leaders who personify the values of Sir Edmund Hillary, and building a 500+ community of innovators and changemakers delivering impact for Aotearoa NZ. Anna shared how the next chapter is about bringing together two global networks who have already created enormous change as individuals so they can catalyse even greater impact, for Aotearoa NZ and the world.

In the year celebrating the 70th Anniversary of Sir Edmund Hillary and Tenzing Norgay’s ascent of Everest, Peter Hillary (via video message from Antarctica) acknowledged the occasion and attendees, and spoke of the mounting challenge of climate change and the need for courageous leadership. CEO Rosalie Nelson explained how the Laureate and Fellow communities are extraordinary by the sense of purpose and ambition that they can and will change the world. She set out the organisation’s goal to provide a connective framework for the two communities to partner and collaborate, with each other and the innovation ecosystem on climate innovation and systems change.

A firm believer in the power of collaboration is Hillary Laureate (2018) Meagan Fallone, India. Meagan, who was born in New Zealand, spoke at the event about her work empowering community-based solutions and the need for collaboration at every level to achieve systems change. On the value of drawing together Laureates and Fellows she said:

“Being part of this community has been really important – not only for me, but for my fellow Laureates. It’s in these communities that we are able to scale our ideas and our work, to use each other’s networks that we’ve spent a lifetime creating, to actually amplify and accelerate ideas that are proven on the ground, ready to go, and working. That’s really what’s required now.”

The Hillary Institute and EHF acknowledge the inspiring and compelling speaking contributions from Te Āti Awa Chair, Kura Moeahu, Sir Edmund Hillary’s son Peter Hillary, 2018 Hillary Laureate, Meagan Fallone, and Fellows – Amy Armstrong, Mike Taitoko, Gary Hirshberg and Owen Gaffney, and Rod Oram for his role as MC. Read more about the event and The Mission Studio on page 30.

HILLARY LAUREATE ACHIEVEMENTS & HIGHLIGHTS

The 11 Hillary Laureates are outstanding global leaders who are devoted and unrelenting in their missions to tackle our planet's biggest challenges – from climate change to poverty to peace and justice. Their work and influence spans the globe – they inspire action, provoke thinking and perhaps above all else – live in service to the betterment of people and planet. This report shares four examples of Hillary Laureates' commitment and achievements during 2022/23.

Visit www.hillaryinstitute.com for all 11 Laureate stories

*“People do not decide to become extraordinary.
They decide to accomplish extraordinary things.”*

Sir Edmund Hillary



VANESSA NAKATE

2022 HILLARY LAUREATE

Two climate disasters in separate areas of Uganda in 2022 reinforced Hillary Laureate Vanessa Nakate's message that a fight for climate justice is a fight for human rights. In Mbale, eastern Uganda, more than 29 people were killed after heavy rainfall caused two rivers to burst their banks, submerging homes, shops, and roads. In Karamoja, north-eastern Uganda, half a million people face starvation due to drought, with hundreds of women and children already dead.

In October 2022, Vanessa became a goodwill ambassador for UNICEF, launching a report highlighting the fact that 559 million children are at risk of heat-related death, with predictions that, by 2050, all of the world's 2 billion children will be exposed to heatwaves on a regular basis. At COP27 in Sharm el-Sheikh, Egypt, in November, Vanessa was in high demand as a speaker at the satellite conferences. She told ministers from G20 nations to end the moral and economic madness of funding fossil fuels and prioritising short-term politics. She pointed out that, with over 600 fossil fuel lobbyists at the event, COP27 felt like a "sales and marketing conference for more pollution, and more destruction, and more devastation". However, due to the high cost of attending, community groups and climate activists were not as well represented.

Vanessa called for wealthy nations to set up the Loss and Damage Finance Facility as a grant fund that small communities in the Global South can access. "For the current and historic emitters, they need to take responsibility for the climate crisis, and they need to pay for this crisis," she said.

In 2021, she launched her memoir ***A Bigger Picture: My Fight to Bring a New African Voice to the Climate Crisis***, sharing her story and her vision for the climate movement, based on resilience, sustainability, and genuine equity. Over the last year, Vanessa has been a strong and insistent voice for climate justice and the rights of children and women. She continues to be an inspiration to front-line communities facing the very real effects of climate change, young people, and activists, all around the world.



AIMÉE CHRISTENSEN

2011 HILLARY LAUREATE

Aimée Christensen spent much of the year reconnecting with people working hard to protect our planet. June was a busy month, starting with the annual Sun Valley Forum in Ketchum, Idaho, hosted by Christensen Global, followed by the inaugural Villars Institute symposium in Switzerland. Aimée joined fellow Hillary Laureates Atossa Soltani and Meagan Fallone onstage to discuss systems leadership, while Johan Rockström hosted a panel on respecting planetary boundaries. In October 2022, Aimée visited Aotearoa New Zealand to deliver the opening keynote address at the inaugural 2035 Oceania Summit in Auckland, where she challenged our record on climate and highlighted pathways for action. The summit brought together people from the Pacific Islands, Australia, Europe, the UK, and the USA, to find local solutions for global climate impact. Aimée heard first-hand accounts of the effects that climate change is having on people across the South Pacific, and some of the localised projects that use innovative agri- and food-tech solutions – like EHF Fellow Mike Taitoko’s *Toha* and *Calm the Farm* initiatives. Aimée noted initiatives like these are inspiring, and says that Aotearoa NZ is uniquely placed to become a showcase for climate-smart agriculture, climate leadership, and renewable energy. Aimée also featured on TVNZ’s Q&A programme, calling for the Government and industries alike to reassess how they operate, what they produce, and do more to reduce emissions in a shorter timeframe. In November Aimée joined a panel of speakers in the UN Climate Change Global Innovation Hub at COP27 to discuss regenerative foods of the future, and Christensen Global co-hosted a dinner with Aleph Farms. Earlier in the year, Aimée tasted her first sustainably-cultivated steak created from the cells of a living, healthy animal, made by Aleph Farms, which was quite a change for the long-term vegan. It demonstrated the potential of an innovative, scalable solution in the ongoing drive to develop more resilient global food systems.



TIM JACKSON

2016 HILLARY LAUREATE

As the fiscal impacts of the global Covid-19 pandemic and Brexit became clearer in the UK, Tim Jackson declared that we are now living in a post-growth world. In a series of articles published in international media outlets, Tim called for politicians to face facts and adjust their economic expectations and policies accordingly – and immediately. In June he joined a roundtable discussion at the 50th anniversary of the delivery of *The Limits to Growth* report from the Club of Rome, hosted at the European Union, to continue the theme of post-growth thinking, and encourage EU Member States to focus their policy implementation on wellbeing in times of crisis, including placing primacy on investing in those in the front line of what he calls the ‘Caring Economy’ – nurses, teachers, first responders, creatives. Supporting one of Aotearoa NZ’s largest businesses, Tim has been a member of Air New Zealand’s Sustainability Advisory Panel since 2019. The panel meets annually with the Air New Zealand Board to help shape and inform their sustainability agenda, which includes caring for people, taking genuine action on climate, driving towards a circular economy, and sustainable tourism. Tim’s latest book: *Post growth: Life after Capitalism* won the 2022 Eric Zencey Prize in Ecological Economics. “This inspiring book is an invitation to reimagine the relationship among our economies, our societies, and our environment,” said Taylor Ricketts, Director of the Gund Institute for the Environment. Tim also spoke to Kim Hill on Radio New Zealand in January 2023 about his book and the concept of de-growth, and how we can all work to live well within the limits of a finite planet. “We have to really, really work hard to get our carbon emissions down, to stop the loss of nature, the devastation of species, the impact on our oceans and our soils and on the atmosphere.”



CHRISTIANA FIGUERES

2020 HILLARY LAUREATE

Early in 2022, Christiana Figueres was appointed an honorary Dame Commander of the British Empire (DBE) for services to international leadership on global climate change, approved by Queen Elizabeth II. “Received with deep gratitude, in recognition of the many brave and tireless people worldwide who toil on the climate and in ecological crises, and with further commitment to continuing to enrich the soil of possibilities for a better tomorrow,” she tweeted.

In April, Christiana was awarded the Wolfgang Friedmann Memorial Award, presented by the Columbia Journal of Transnational Law. “Her continued leadership efforts to accelerate the intentional transformation of the global economy towards low carbon and high resilience demonstrate not only her dedication to creating a clean, green, healthy world but also the breadth of her expertise in collaborative diplomacy,” the citation read. She also received the 2022 Great Negotiator award from Harvard Law School.

Christiana is also Chair of The Earthshot Prize Board and interviewed Bill Gates at New York Climate Week in September, discussing the importance of adaptation to prevent a global agricultural disaster. The Earthshot Prize welcomed Jacinda Ardern onto the Board after her resignation as New Zealand’s Prime Minister earlier this year (2023).

The **Outrage + Optimism** podcast Christiana co-hosts with Tom Rivett-Carnac and Paul Dickinson, was named one of the top 10 sustainability podcasts by Sustainability Magazine. It features interviews with a range of guests, including Sir David Attenborough, Greta Thunberg, and fellow Laureates Vanessa Nakate and Johan Rockström – offering its audience a sense of hope that there is still time to save our planet.

outrageandoptimism.org/episodes



EDMUND HILLARY FELLOWSHIP

A REVIEW OF 2022/23

PARTNERING WITH AOTEAROA NEW ZEALAND

During 2022/23, EHF Fellows partnered with Aotearoa New Zealand to deliver significant value and impact. Following a period of uncertainty due to the Covid-19 pandemic and the reopening of borders, Fellows were able to resume projects and continue creating and compounding meaningful impact.

This section shares the value that Fellows delivered for Aotearoa NZ's innovation system and businesses, how they supported communities of interest and place, and tackled local and systemic challenges.

Contributing to Aotearoa NZ's Innovation System

In a single year, Fellows made a substantial impact to Aotearoa NZ's innovation system and helped grow Kiwi businesses. They did this by starting and scaling ventures, leveraging global connections, and providing mentorship and thought leadership. Fellows helped raise capital for New Zealand-based Business Organisations (NZBOs) of more than NZ\$312.2m – an **increase of 30%** from FY22, and directly invested more than NZ\$114.8m into at least **146 NZBOs** – more than five times the amount invested in FY22 (\$21.2m).

The following are examples of how Fellows contributed.

Supporting Kiwi globalisation: US Fellows Lisa Nelson and Mark Bregman supported the third successful delegation of Kiwi startups, led by Angel Association NZ and New Zealand Trade and Enterprise, to the San Francisco Bay area in August/September 2022. They introduced the delegation of 12 Kiwi businesses including some of their investors to US-based investors, who provided insights about the local market and connections into the US/West Coast tech ecosystem. This in-country support helps NZ startups, their founders and investors better understand the market they are attempting to break into. It equips them with valuable knowledge including how to do due diligence on investors, how to attract US-based talent, and navigate US legal and accounting requirements.

Investing in Aotearoa NZ: The NZVC fund with partner Mark Pavlyukovskyy and venture partners, Vishal Chaddha and Rich Bodo, have so far deployed NZ\$7m, with **\$5m** into **24 NZ companies**. This has helped propel forward Kiwi startups including Seachange (electric car ferries), Dotterel (audio technology), Pyper Vision (fog dispersal system) and Chnnl (employee wellbeing startup) – all of which are success stories on the local and global stage.

Helping businesses scale: Fellows Lovina McMurchy, Lisa Nelson, Randy Komisar, and Mohan Nair have also made a significant contribution by attracting capital, cultivating investment funds, and aligning investments to Aotearoa NZ enterprises, through their respective advisor roles with Movac, New Zealand Growth Capital Partners and New Zealand Trade & Enterprise.

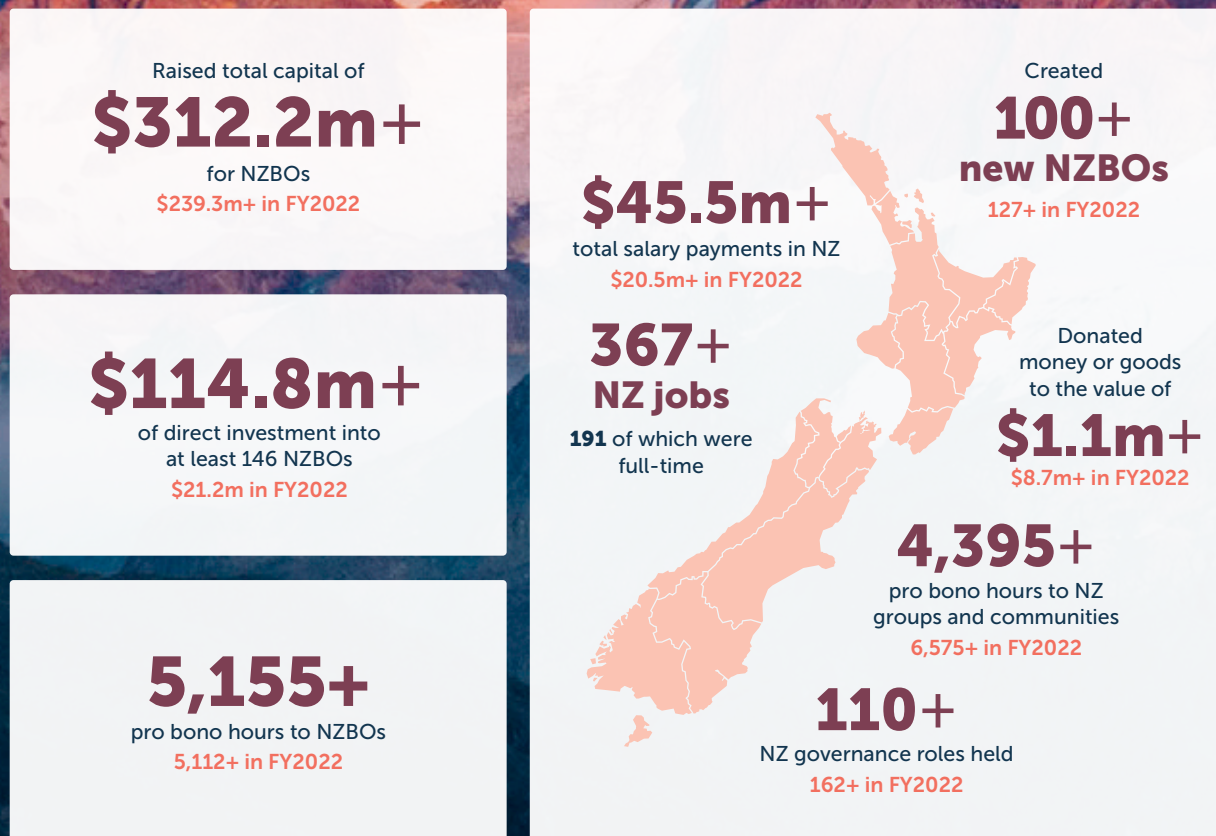
Sharing skills and experience: Fellows Oliver Bruce, Thiago Canellas and Brian VonHerzen contributed their time, skill and expertise to the Callaghan Innovation White Paper on Digital Assets and Decentralised Finance. Fellows and the EHF Team also worked with Callaghan Innovation, other government agencies and the ecosystem to create the Web3.0 community platform as a space to meet, learn about and collaborate with Web3 founders, creators and businesses.

Thought leadership: Fellow and CEO of Los Angeles Cleantech Incubator (LACI) Matt Petersen was a keynote speaker at the Blue and Green Technology Conference in Auckland in December, where he observed that Aotearoa NZ is leading the way when it comes to incubating clean technologies. Matt also shared his innovation experience and LACI programmes to support an inclusive green economy with Tātaki Auckland Unlimited and Climate Connect Aotearoa.

Delivering Impact for Aotearoa New Zealand

2022/23

Fellows created impact for NZBOs[†] Fellows created impact for Aotearoa NZ



[†] New Zealand-based Business Organisations

Research Note: 522 Edmund Hillary Fellows were invited to complete an Impact Survey administered by independent researchers, Curran Research Associates. 23% of Fellows partially or fully completed the survey (July/August 2023). All numbers relate to the 2022/23 Financial Year, are self-reported and represent only those numbers for up to N=118. Actual numbers and contributions are expected to be higher than what is reported here.

Amendment note: This version includes updated figures based on final impact findings



SUPPORTING KIWI FOUNDERS TO THRIVE

Justin Milano & Abroad

Justin Milano, founder of Abroad, is supporting Kiwi founders, their teams and investors to create outsized impact and value, and to stay well.

The Abroad 'New Zealand Founder Wellbeing Programme' draws on scientific research and ancient wisdom and is co-facilitated with Tuihana Ohia from Woo Wellbeing whose whānau whakapapa to Tauranga. Startup teams, just like others in Aotearoa NZ, face significant mental health challenges.

The gaps in startup founder support have now been identified, and with programmes such as Justin's, measures are being put into place to create a 'wellbeing economy' within Aotearoa NZ's innovation ecosystem. From June to September, NZ entrepreneurs and investors had the unique chance to engage weekly in the 4-month New Zealand Founder Wellbeing Programme; an opportunity made possible through partnerships with Angel Association NZ, New Zealand Growth Capital Partners, Callaghan Innovation and New Zealand Trade and Enterprise, whose support enabled the initiative to be accessible including scholarships for tangata whenua founders.

After the completion of the NZ programme, Justin reported on the measured growth among 50+ participants, with a notable improvement across areas such as managing workload to maximise impact, buffering against occupational burnout, and flexibility in the face of unexpected or unintended situations, plus more.

Angel Association Executive Chair, Suse Reynolds said the Abroad programme has had an incredible impact on Aotearoa NZ's startup ecosystem and on the individuals who have taken part. "We have had such effusive feedback, including from a number who have said it has quite literally changed their lives. And it is terrific to see Callaghan Innovation, with the recent announcement of services to augment programmes like Abroad, making support for startup team wellbeing systemic." The success of the NZ programme has resonated globally, with plans for replication in other innovation hubs, such as Singapore and Chicago. This expansion positions Aotearoa NZ as a successful proving ground to demonstrate the positive impact of holistic leadership development within the entrepreneurial ecosystem.

abroad.io/nz-founder-programme-2023

Supporting Communities in Aotearoa NZ

At a time when communities and regions were still grappling with the effects of the Covid-19 pandemic, many were also impacted by extreme weather events. In 2022/23, cyclones, high winds and flooding affected many people's livelihoods, homes, and wellbeing, as well as causing damage to the natural environment and critical infrastructure, such as roads and bridges.

During this period, Fellows dialled up their efforts to tackle the local and national challenges facing Aotearoa NZ.

Supporting the recovery

Following the devastation of Cyclone Gabrielle (February 2023) in Te Tairāwhiti (Gisborne) and Te Matau-a-Māui (Hawke's Bay), Fellows swiftly mobilised to support the recovery efforts.

- **Disaster response and resilience** Elizabeth McNaughton and Jolie Wills, disaster response experts and founders of Hummingly, responded to organisations looking for best practice advice to support employees and clients affected by the cyclone by offering a free 'masterclass' webinar, which was attended by 200 people.
- **Unlocking resources for on-the-ground work** Nathalie Whittaker and her Toha colleagues contributed to supporting the East Coast by setting up East Coast Exchange. This transparent and decentralised donation model publicly stores donation and project data, while also offering on-the-ground visibility into needs and progress, like replanting and restoring clean water. *Also see story on page 21.*
- **Resilient housing initiative** Kim Aitken developed a pilot project to design Aotearoa NZ's first buoyant housing foundation to aid the rapid rebuild or renovation of houses following a flood. The aim is to share the prototype designs for public use. The first buoyant foundation will be combined with a climate resilient Truss House™ for a Hawke's Bay family displaced by Cyclone Gabrielle.
- **Supporting Tolaga Bay** Chris Jansen and Janine Edge helped Lily Stender and Tolaga Bay Innovation to determine short-, medium- and long-term focus areas for recovery efforts. Chris and Aaron McDonald also

donated koha to help set up a Tolaga Bay Innovation community space, which is being utilised for hui to discuss and initiate projects. Lily has been working with Scott Miller to launch Tolaga.org, a brand-new ever-green fund providing seed loans for indigenous grassroots entrepreneurs and businesses. The fund has supported four Tolaga Bay Māori-led businesses and is planning to scale.

- **Sustainable community solutions** Since arriving in Aotearoa NZ from Botswana, Thabiso Mashaba has been supporting the Tolaga Bay community to find solutions to the slash and forestry debris problem. Alongside Lily, local iwi, and the Mana Taiao Tairāwhiti Group, Thabiso has initiated 'Slash for Cash'. The programme partners with unemployed community members to convert slash into marketable products, with plans to scale.

Supporting community: The EHF Community Collective

The EHF Community Collective supports and funds Fellows' projects that make a difference to communities in Aotearoa NZ and activates the Fellowship. Initiated by Fellows Janine Edge, Lily Stender, Andrew Hoppin, and Alanna Irving, the EHF Community Collective has seen multiple Fellow projects shared on the platform, resulting in more than NZ\$50k of additional Fellow funding to support Fellows' initiatives. Examples include the development of flood-resilient housing models, creating opportunities for Kiwi students through scholarships, and a challenge for high school and university students to use space to address climate change.

Creating community: EHF Climate & Nature Action Group

Aligned around a common purpose, Fellows have self-activated by coming together to form a Climate and Nature Action Group. The purpose of the group is to foster an environment for shared knowledge and mutual support across each other's endeavours in environmental sustainability. Meeting once every quarter, the group facilitates the exchange of knowledge and resources, enriching their understanding of evolving policies, strategies, and scientific insights related to climate and nature. The group also discusses how they can support and collaborate with The Mission Studio.

Commitment to inclusivity and equity

During 2022/23, Fellows' commitment to Te Tiriti o Waitangi and addressing inequalities was evident in the following ways:

- The degree to which Te Tiriti o Waitangi and understanding of biculturalism in Aotearoa NZ influenced Fellows work lifted from **29%** 'highly influenced' (previous year) to **50% highly influenced**.
- **51%** believe their projects *have had or will have* a **strong positive impact** on 'Reduced Inequalities'¹ in relation to Aotearoa NZ, and an additional 44% believe their projects would have a medium positive impact.
- Fellows reported an increase in the degree to which they were changing the status quo or creating systemic impact in Aotearoa NZ from **11%** creating 'high impact' last year to **20% creating 'high impact'** this year.
- The three groups where Fellows' work and activities had the greatest degree of 'high direct involvement'² was with underserved or disadvantaged communities (60%), groups working to improve environmental wellbeing (55%) and groups working to improve social wellbeing (55%).

Fellows also donated money or goods to the value of more than NZ\$**1.1m** and gifted more than **4,395 pro bono hours** to NZ groups and communities.

¹ The question was in reference to each of the United Nations Sustainable Development Goals (UNSDGs).

² High direct involvement was defined as regular engagement and sharing of information that can influence the structure and way Fellows work.



EHF FELLOW HIGHLIGHTS & ACHIEVEMENTS



TRANSFORMING MĀORI EDUCATION AND REVITALISING IDENTITY

Rangimarie Parata Takurua & Te Pā Rākaihautū

For more than 30 years, Rangimarie Parata Takurua has been dedicated to creating systems transformation in education for Aotearoa New Zealand. Collaborating with whānau (family), community, and government, her vision centres on revitalising Māori education and normalising Māori succeeding as Māori.

Through her involvement with Nōku Te Ao Charitable Trust, Rangimarie partnered with the Ministry of Education to establish Te Pā o Rākaihautū in Ōtautahi Christchurch, which first opened in January 2015. Te Pā o Rākaihautū is a unique 21st century pā wānanga (learning village). It operates on a single site, spanning early childhood to tertiary education, dedicated to achieving educational excellence and success for the entire whānau. The school's core kaupapa (purpose) lies in revitalising cultural identity, reconnecting with heritage and places, reigniting a passion for learning, and reshaping Māori educational achievement. Since its establishment, Rangimarie has worked tirelessly to explore opportunities for how the learning village can be expanded to create further connection and restoration of Māori traditions and practices. Rangimarie's overarching vision is to evolve Te Pā into a distinctive 21st-century pā wānanga (learning village). Teaming up with fellow EHF Fellow and education advocate Joanne

McEachen (of Kia Kotahi Ako), they have been actively engaging with iwi and local community to understand aspirations of what a modern-day learning village could look like in the area.

Meanwhile the success of the kura has been evident through achievement data compiled in a recent Education Review Office report, showing students are meeting or exceeding appropriate levels for reading, writing, and mathematics. The school's NCEA achievement rates are also well above the national average. Students also participate in community activities such as meal preparation, reinforcing the school's values beyond the classroom. There is significant demand for enrolment, with a full roll and a long waiting list.

Rangimarie says, "Te Pā is the school that whānau built! Our education system has not always been kind to our kids, and despite numerous pilots and well-intended programmes over many generations, it has been acknowledged that there has been a failure to close the significant gap between Māori and non-Māori achievement and retention. Te Pā is changing that and in doing so, is changing the life trajectories of so many of our rangatahi (youth). We are so proud of our students and graduates who are already carving out new worlds for the next generation. Tu ki te ao tau ana!"



Toha co-founders (from left to right) Mike Taitoko, Nathalie Whitaker and Shaun Hendy

ENABLING PROSPERITY THROUGH REGENERATION

Mike Taitoko and Nathalie Whitaker & Toha

We all have a role to play in the regeneration of our planet. That is the belief firmly held by Mike Taitoko and Nathalie Whitaker, who are leading the way to find new environmental finance solutions for Aotearoa New Zealand. They are the co-founders of Toha, a digital platform designed to channel funding and support towards projects that address environmental and climate challenges. In the last year the Toha whānau has grown. Originally starting out as a single venture, Toha has expanded into The Toha Network, bringing together like-minded ventures around the collective goal of enabling economic prosperity through regeneration, starting in Aotearoa NZ. Mike and Nathalie believe that Aotearoa NZ's ability to build a low-emission food system is critical to that very prosperity. Which is why Toha has been identifying barriers within the current funding, supply chain, and export models that impede Aotearoa NZ's ability to progress, as well as researching global and local climate solutions. As an example, Toha is advocating for a shift from monocropping to integrated farming with livestock, natives, and horticulture. They want a sustainable ecosystem that prioritises local food access, introduces blended capital funding, and enables farmers' transition to regenerative practices. Empowering farmers to adopt new ways of farming sustainably was a message that Mike – who grew up milking cows – shared at the 2035 Oceania Summit in October 2022, where he was part of a panel discussion

on regenerative agriculture solutions. Mike notes that transforming the system so that it focuses on building 'a network committed to change' and fostering local regenerative food systems, is what's needed to move things forward.

Moving things forward – quickly – was certainly Nathalie's goal when she set up East Coast Exchange in the wake of Cyclone Gabrielle. Nathalie, who founded Givealittle, knew that the recovery would cost millions, but the contribution of many in the community could easily be overlooked or not valued appropriately. So she set up East Coast Exchange as a public record of the work that allows people to earn 'contribution points' and exchange them for funding.

Six months following its establishment, the East Coast Exchange had a total community contribution value of more than 1,500,000. This means that those who helped with the emergency response from the clean up to giving kai (food) and equipment, through to the recovery of the Tairāwhiti area's biodiversity, like replanting trees, can have their contributions – big and small – properly valued.

For more about the work of Toha, East Coast Exchange and the other ventures in the Toha network including NZ Climate Innovation, which is an impact investment marketplace designed to accelerate climate action and environmental innovation in Aotearoa NZ and Calm the Farm, visit the website.



REVOLUTIONISING TECH FROM NZ

Boyd Multerer & Kry10 Limited

Boyd Multerer is making a big impact in global cyber defence technology and practices. And he's doing it from Aotearoa New Zealand.

Known for his pivotal role in shaping Xbox Live's technical landscape, Boyd established Kry10 Limited – the first modern platform for mission critical connected devices. Based in Wellington, he's demonstrating how Aotearoa NZ can be a basecamp for global entrepreneurs to launch businesses and create high-value jobs and skills development locally. Kry10's focus on creating an innovative new operating system and software stack tailored for mission-critical connected devices holds immense promise for sectors, such as automotive and renewable energy. With sectors such as these dependent on computers and increasingly using AI, Kry10 has emerged as a catalyst for change. Boyd's platform addresses a pressing need for secure software updates that thwart hackers and meticulously isolate bugs, ensuring the stability of interconnected systems.

In August 2022 NZ tech investor Movac announced its seed investment in Kry10, acknowledging the remarkable potential of Boyd's technology to reshape the tech landscape and drive transformation across industries, done from right here in Aotearoa NZ.

Boyd says, "New Zealand has been pivotal in allowing Kry10 to get off the ground given the local talent and it's exciting to be progressing our core engineering work from this part of the world." Boyd sees Aotearoa NZ as the proving ground for future development and growth in this new system, accelerating the trajectory of Aotearoa NZ's tech industry. Boyd is supported by Fellow Lovina McMurchy who joined as Kry10's Chief Operating Officer in September 2022 to build the team and lead fundraising and sales.

kry10.com



DISRUPTING LENDING SYSTEMS

Sasha Lockley & Money Sweetspot

After years of working in conventional financial systems, Sasha Lockley became disillusioned by its apparent lack of empathy for those in debt. She wanted to help families and communities move through debt, and not be defined by it. So Sasha founded Money Sweetspot, a NZ-based finance company with a human-centric ethos focused on creating social change within the financial system. Shifting the focus from mere monetary transactions to fostering positive societal impact, Sasha knew finding the right investors was paramount to creating a sustainable finance model that would leave a lasting footprint on the community, signing up Christian Savings, Tindall Foundation and Anglican Care Waiapu as core investors.

By 2022, Sasha had raised capital and solidified a three-year partnership with BNZ, which involved a NZ\$5m fund dedicated to realising her vision – a collaboration sparked through an EHF and BNZ meeting.

Money Sweetspot officially launched in March 2023, going on to deliver more than NZ\$7m in financial resets to families all over Aotearoa NZ, saving an estimated NZ\$3.5m for those families. BNZ has since committed to doubling its support to NZ\$10m. Money Sweetspot has also helped more than 1000 whānau (families) connect to financial education and support.

"The true impact that we create lies in offering Kiwi families the breathing room and space to dream. We are committed to listening to our customers, and to granting them the opportunity to regain financial control. Because how can Kiwi families plan for a future filled with nourishment, growth, and learning if they're in a state of financial stress?" says Sasha. In July 2023, Money Sweetspot won the 'Biggest Impact on Financial Health' award at the Global Financial Wellbeing Awards.

moneysweetspot.co.nz



CULTIVATING REGENERATIVE ORGANIC FUTURES

Gary Hirshberg

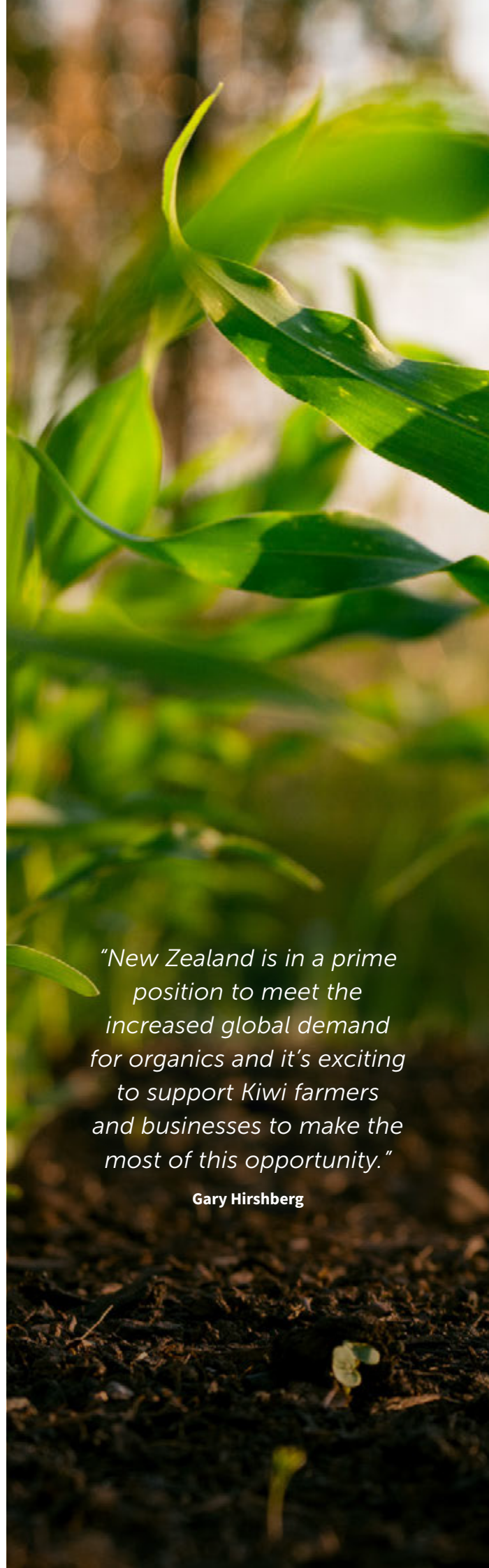
Gary Hirshberg is passionate about transforming Aotearoa New Zealand's regenerative organic agricultural landscape. Drawing on his experience as co-founder of US-based Stonyfield Farm – a globally recognised brand in the organic food market – Gary has been actively supporting and promoting Aotearoa NZ's organic entrepreneurship and organic farming.

In November 2022, Gary ran the 5th Annual Hirshberg Entrepreneurship Institute. This 3-day bootcamp in Auckland was to equip attendees with essential skills for regenerative organic farming, effective marketing strategies, international market entry, and e-commerce skills. In addition, Gary's developing Organic Entrepreneurship Centre in Motueka hopes to serve as a practical hub for hands-on learning in regenerative organic agriculture and holistic business.

In these settings, Gary uses his knowledge of key issues, like the rising global demand for regenerative organic produced goods, to help Aotearoa NZ farmers and entrepreneurs. He also provides them with guidance on how to adopt regenerative organic practices. Gary's emphasis on sustainable business aligns with growing consumer preferences for eco-conscious brands. He's committed to help grow Aotearoa NZ's international reputation as a regenerative organic agriculture leader, particularly in growth markets across Europe and Asia. Ultimately the aim is to support thriving ecosystems and a resilient economy for Aotearoa NZ.

Gary's impact for Aotearoa NZ – leveraging his extensive experience and networks – is shaping a more prosperous future for our regenerative organic industry, while also addressing environmental challenges and economic progress.

hirshberginstitute.com



“New Zealand is in a prime position to meet the increased global demand for organics and it's exciting to support Kiwi farmers and businesses to make the most of this opportunity.”

Gary Hirshberg

FELLOWS' IMPACT SNAPSHOTS



Dylan Field, co-founder of Figma, a leading web-first collaborative design platform, entered into an agreement for Figma to be acquired by Adobe for approximately US\$20 billion in cash and stock. In the September 2022 announcement, Dylan noted the opportunity and need to make developer and design tools more accessible.

Rasha Abu Safieh co-founded STARlab, a research unit within the University of Otago's Social and Community Work Programme. STARLab's current research focuses on social innovation and social entrepreneurship in systemic change initiatives that seek to advance progress towards the UN Sustainable Development Goals. Rasha also won the Academic Initiative of the Year Award at the Global Entrepreneurship Network Awards 2022.



Brian von Herzen and the Climate Foundation won a Milestone XPRIZE of US\$1m for Carbon Removal for their SeaForestation.Co project. The XPRIZE Carbon Removal is aimed at tackling the biggest threat facing humanity – fighting climate change and rebalancing Earth’s carbon cycle.



Camden Howitt won the New Zealand Environmental Hero of the Year Te Toa Taiao o te Tau award at the Kiwibank New Zealander of the Year Awards in March 2023. Camden is the co-founder of national charity Sustainable Coastlines, is on PwC’s Sustainability and Climate Change team, and is a member of the Aotearoa Plastic Pollution Alliance. He has dedicated more than a decade to designing and delivering community environmental programmes to protect and regenerate te taiao (nature) around Aotearoa NZ and the South Pacific.

Damien Scott’s EV optimisation company, Marain, was acquired by BrightDrop, the commercial EV subsidiary of General Motors, to help commercial customers electrify their vehicle fleets and lower operational costs, and to scale the positive impact of decarbonising the last mile.



Kaye-Maree Dunn partnered with Te Whare Wānanga o Awanuiārangi and NZTech to initiate a research project to build an initial map of the Māori Tech Sector. This research project explores what the tech sector looks like from a Māori perspective, based on interviews with those working across different tech roles, key influencers and educators supporting Māori into tech training or tech jobs. This work was supported by the Ministry of Business, Innovation and Employment (MBIE).



Aya Miyaguchi, Ethereum Foundation Executive Director, contributed her time and expertise to Aotearoa NZ’s Web3 community, scoping out community projects, and sharing insights.



Joanne McEachen was announced as one of the new members of the KEA World Class New Zealand Network, recognising inspiring global Kiwis who lead and shape industries, raise Aotearoa NZ’s profile on the world stage and give back to the communities in which they live and work.



Tim Pare's Tea Leaf Trust won the International Aid and Development category in the prestigious UK Charity Awards. Tim's Funding Network NZ also won the 2022 FINZ Excellence in Innovation award for the pilot Generosity Generator online fundraising programme, which trains charities in planning and delivering a successful online crowdfunding campaign. Over three programmes, Tim has trained more than 100 charities and helped 86 of them to raise over \$600k.



Jase Te Patu worked with schools and communities around Aotearoa NZ to teach methods of dealing with stress, by utilising the power of Māori pūrākau and whakataukī to create mindfulness. Jase's work helps to improve the mental health of tamariki (children), rangatahi (youth) and the wider community to grow strong leaders for future generations and helps to lift the mana and connectedness of Aotearoa NZ as a nation.



Veronica Stevenson, Humble Bee bioplastic pioneer, signed a deal with a US company to perfect the recipe for making the plastic with genetically modified microbes. She also closed a \$5m oversubscribed round, and featured in TechCrunch to share knowledge about how the company is researching a biodegradable alternative to plastics by synthesising the biology of bees.

Tim Moor compiled a comprehensive feasibility study for Callaghan Innovation, focusing on the practicality of establishing a pioneering pyrolysis plant within Aotearoa NZ. This innovative initiative aims to prevent plastic waste from becoming landfill and instead be converted into a valuable commodity that can be processed into polymer. Tim's recommendations in the study would help Aotearoa NZ to transition towards a fully realised circular economy.



Nathaniel Calhoun who advises Eco-index - a toolkit which supports decision making around biodiversity management, investment and restoration priorities, helped it become Aotearoa NZ's first certified Digital Public Good. Nathaniel is a champion of making information and technological solutions freely available, and believes certification such as this opens up pathways for international collaboration.



Jeff Schlichting and **Tim Derrick** (Helios Energy) are helping Aotearoa NZ move to a zero-carbon future. In August 2022 they announced a solar power development that would generate enough clean electricity for approximately 25,000 homes. It was also the first grid-scale solar development in the country to receive contracted permission (Transpower) to connect to the national grid.

Jeff and **Tim** also partnered with Fellow-led Kia Kotahi Ako (**Sarah Grant, Joanne McEachen** and **Barry Neal**) to sponsor and support the pilot solar project at Homai Primary School in Tāmaki Makaurau / Auckland, to inspire rangatahi (youth) about the potential of renewable energy and create excitement about hands-on science, technology and innovation.

Daniel Price and **Philipp Suelthrop** worked together on the Kea Aerospace project testing Aotearoa NZ's first zero-emissions, solar-powered stratospheric aircraft, which can capture data intelligence from high above extreme weather events, producing high resolution imagery to enable environmental monitoring, precision agriculture, and disaster management. Their cutting-edge work is contributing to a growing, high-value aerospace industry in Aotearoa NZ, creating jobs and opportunities for the country.

In his role as Chair of Community Finance, **Steven Moe** helped to raise NZ\$125m used for social housing. The funds raised are used to provide low-cost finance to Aotearoa NZ's Community Housing Providers to build new, safe and affordable homes for Kiwis.



Arash Tayebi, Sahar Izadi, Farmehr Farhour and the Kara team raised NZ\$1.3m during seed round. Kara is building a more equitable and accessible global communications system for the deaf community through a combination of motion capture, AI, and neural network algorithms.

To find out more about EHF Fellows, visit ehf.org/fellow-directory

HOW EHF SUPPORTED FELLOWS IN 2022/23

EHF's core focus in 2022/23 was simple – help Fellows to land, (re)connect and integrate into Aotearoa New Zealand after two years of Covid-19 pandemic uncertainty and border closures.

As the 2022/23 year began, New Zealand's borders started to reopen. The EHF team worked swiftly to redevelop welcome plans and help international Fellows get their Global Impact Visas. In less than 12 months, EHF had welcomed and inducted more than 200 Fellows (NZ and International) to Aotearoa NZ and the Fellowship, and supported Fellows to connect with each other, into local communities, regions, businesses and sectors, through a range of events and resources.

In this period, 160 international Fellows obtained their Global Impact Visas: 16 have settled with many more exploring opportunities and making subsequent visits.

During 2022/23, EHF delivered on its contractual commitments, while advancing several strategic initiatives, such as the development of The Mission Studio.

55% of Fellows said their understanding of Te Tiriti and bi-culturalism had 'improved a lot', up from 27% the previous year.



Iti Rearea (Oct 22). Photo by EHF Fellow Chris Gagne.

Highlights during the year included:

- **Hosting three 3-day in-person Welcome Experiences*** to integrate more than 200 Fellows into the Fellowship and Aotearoa NZ. After more than two years of Covid-related delays, these events allowed Fellows to meet in person and explore Aotearoa NZ as a basecamp for global impact. **Partnering with Te Āti Awa Taranaki Whānui**, the EHF team supported Fellows to build meaningful connections and grow their understanding of te ao Māori and Aotearoa NZ as a bi-cultural nation.
- **Elevating Fellows' Māori cultural competency and understanding of Te Tiriti o Waitangi** by offering online learning sessions on: 'Tiriti Overview' with Bill Hamilton (Ngā Rauru, Ngāti Raukawa, Ngāti Kahungunu), and 'Tiriti breaches and redress' with Sharn Maree (Ngāpuhi). As Tangata Tiriti (People of the Treaty), EHF is committed to integrating learning and understanding of Te Tiriti o Waitangi into the Fellowship as foundational knowledge.
- **Delivering seven regional virtual roadshows** in partnership with economic development agencies, to provide high-value sessions to connect Fellows into local entrepreneur communities, regions and impact opportunities.
- **Co-ordinating stakeholder and in-person regional meetups**, working with partners such as Tātaki Auckland Unlimited and Kāpiti Coast District Council to host in-person Business Days and stakeholder networking events to connect Fellows into the regions. In addition, holding Fellow meet and greets with New Zealand Trade and Enterprise, Government and key stakeholders in the wider innovation ecosystem.
- **Showcasing and connecting Fellows into the ecosystem** by running 12 online Live Sessions aiming to support New Zealand businesses and industries to consider important topics, such as Angel Investing,

Circular Economies, Climate Change and Sustainability, Marketing and Branding Support, Future-proofing Agriculture, Supply Chain, Mental Health and Breakthrough Therapies, Leadership Misconceptions and Innovation Framework.

- **Supporting 160 Fellows to obtain a Global Impact Visa (GIV)**, with the EHF Team connecting Fellows into advice and tools for visa applications, coordinating several Q&A sessions, and providing reminders and frequent communication, ensuring the vast majority of international Fellows without a GIV applied before the end of December 2022 final close date of GIV applications.
- **Facilitating 21 Permanent Residence Visa (PRV) Support Letters** from EHF for Fellows on the pathway to permanent residence to include in their PRV applications, whereby their activity and impact in Aotearoa NZ is reviewed and assessed based on an impact points system to determine whether a Support Letter is provided.
- **Maintaining connection and engagement among Fellows and the EHF team** during and after border closures, with online monthly strategically focused 'All Hands' calls providing Fellows insights into current issues and the environmental landscape of Aotearoa NZ, and a space for Fellows to ask questions, share ideas, and connect.
- **Scaling the team** by appointing new team members and bedding down an organisational structure focused on Fellowship Experience, Impact and Communication, increasing the overall capacity and capability of EHF.

* The final Welcome Experience was held in May 2023 during the 2023/24 financial year.



Ngā Manu Titi Rere Ao (Aug 22). Photo by Erica Austin, Peanut Productions.



Manu Tukutuku (Mar 23). Photo by EHF Fellow Chris Gagne.

A NEW EXPEDITION: DEVELOPING AND ANNOUNCING

◆ The Mission Studio

On 23 February 2023 in Tāmaki Makaurau / Auckland, the Hillary Institute and EHF announced their plans for ‘a new expedition’ to draw together Laureates and Fellows and introduced The Mission Studio.

CEO Rosalie Nelson highlighted that Fellows and Laureates wanted to come together to transform systems and saw Aotearoa NZ as a basecamp to demonstrate change and global leadership. Over 150 attendees, both in person and online, including EHF’s iwi partners Te Āti Awa, founders, stakeholders and supporters, heard how the Mission Studio would serve as a ‘connective tissue’ working with iwi, Laureates, Fellows, industry, government, leaders and communities. She announced Climate Innovation as the first mission, with four focus areas of energy transition, nature restoration, sustainable food, and resilient communities.

The Mission Studio’s announcement followed discussion and development with Fellows, Laureates, stakeholders and systems experts. The team explored the potential for collective impact at scale during the Welcome Experiences during the year, and undertook research into different impact models and change theories. The Mission Studio model draws from ‘Breaking Boundaries’ the work of world-leading climate scientist and Laureate, Johan Rockström, and Fellow Owen Gaffney on defining systems transformation, and the Mission Challenge model developed by groundbreaking economist Mariana Mazzucato. Underpinning The Mission Studio are the values of Sir Edmund Hillary, and te ao Māori principles, recognising Te Tiriti o Waitangi as New Zealand’s founding document.

Rosalie concluded the announcement by saying, “Systemic change must be led by those on the ground, working in concert with researchers and innovators to develop and implement practical solutions. This is what The Mission Studio offers.”

For updates on The Mission Studio’s progress during 2023/24 including the first convening on nature restoration, visit www.ehf.org

EHF IN NUMBERS

2022/23



12

live sessions on

Marketing & Branding Support

Angel Investing

Future-proofing Agriculture

Mental Health & Breakthrough Therapies

Leadership Misconceptions

Supply Chain

Circular Economies & Climate Change/Sustainability

Innovation Framework



200+

Fellows
welcomed to NZ
& Fellowship



21

regional in-person
ecosystem partner
meet-ups



3* Welcome
Experiences

*4th/final Welcome
Experience held in May 2023



10

Te Tiriti training
sessions



7 NZ regional
online sessions



17

All Hands
calls



14 Fellow information
& support sessions

HOW EHF DELIVERED FOR THE FELLOWSHIP

Integrating Fellows into Aotearoa New Zealand

COMMITMENT	STATUS	2022/23
<p>Induction to NZ – Welcome Experience</p>	<p>Achieved</p>	<ul style="list-style-type: none"> • 3 x 3-day Welcome Experiences completed*, all which included pōhiri (Waiwhetū Marae) or Mihi Whakatau by Te Āti Awa • Integration of te ao Māori into programme including whakawhānaungatanga and Tikanga Māori • Two-part Te Tiriti online training with digital resources and recommended reading provided • 1 x online NZ history session “A short history of Aotearoa New Zealand with Historian Jock Phillips” • Links to online resources as induction support, e.g R&D Tax incentive, relocation specialists, immigration support, business set up advice, settling in NZ map <p><i>* Fourth and final Welcome Experience was delivered in May 2023 (23/24 FY)</i></p>
<p>Run programmes to support better integration into NZ and regions</p>	<p>Achieved</p>	<p>Connection and integration events including:</p> <ul style="list-style-type: none"> • 3 x Fellows’ Hui to connect Fellows to each other and identify opportunities for collaboration • Series of stakeholder in-person events with strategic partners and business days with economic development agencies • 7 x Virtual Roadshows with economic development agencies connecting Fellows to the regions • 12 x Live Sessions to support New Zealand businesses and industries and share Fellow expertise <p>1:1 connecting Fellows to special appointments, advisory, governance and mentoring roles to support Government and the ecosystem.</p> <p>Connected Fellows to Aotearoa NZ – universities, investors, government, agencies, startups and incubators / accelerators, matching demand and skills.</p> <p>Partnered with Callaghan Innovation, TechWeek, NZ Angel Association, Ministry of Awesome and more on initiatives, events, and connections into the ecosystem.</p> <p>Provided investment deal flow from Aotearoa NZ and pathways for Fellows to engage with the investment ecosystem.</p>
<p>Liaise with industry players</p>		
<p>Support Fellows to actively engage with NZ’s entrepreneurship ecosystem</p>		

Visa and other obligations

COMMITMENT	STATUS	2022/23
Code of Conduct	In progress <i>In 2023, kawa (non-negotiables) will be identified and introduced – in partnership with Te Āti Awa.</i>	<ul style="list-style-type: none"> • EHF Terms of Use for Fellows continued • Event Code of Conduct with Tikanga Māori developed and applied • Social Media Community Rules continued • EHF Values Compass reviewed with plan to integrate and action across Fellowship
Support Fellows with Visas: Global Impact Visa process; letter of support for Permanent Residence <i>Note: GIV pilot programme concluded.</i>	Achieved / Ongoing	<ul style="list-style-type: none"> • Personalised support for Fellows' visa applications, and those waiting for borders to re-open (fully) • Regular engagement with Immigration NZ around borders and visa processing • 160 Global Impact Visas approved • 2 x Permanent Residence support letter processes for Fellows to request a letter of support to apply for Permanent Residence based on activity and support. 21 letters provided • 43 Permanent residence visas granted by Immigration NZ • Continuous improvements to the PRV scoring system which is used to determine who receives a letter of support
Managing media and significant public comms in partnership with MBIE	Achieved	<p>Proactively engaged with MBIE on public communications and media engagement</p> <p>Placed positive stories and op-eds highlighting the value of the GIV programme and Fellows' expertise and contributions</p>
Creation of a self-funded delivery model	In progress	EHF has been actively exploring future business models. This includes systemising the Fellowship Experience, and collaboratively developing 'The Mission Studio' as a platform for mission-led innovation, focused on climate.

Reporting

COMMITMENT	STATUS	2022/23
Performance monitoring	Achieved	<ul style="list-style-type: none"> • Provided six-monthly financial updates • Delivered quarterly reports highlighting key activity and outcomes • Provided annual strategic plan • Undertook impact research on Fellows' impact (quantitative and qualitative) – highlighted in 2021/22 Annual Report, and qualitative research with stakeholders • Annual Report – delivered October 2022

THE BOARD

To unlock the potential of two extraordinary groups – Laureates and Fellows – the Hillary Institute and EHF have a single board and unified management structure to ensure close alignment between the two organisations.

For biographies, visit www.hillaryinstitute.com



ANNA KOMINIK
(Chair)
Hillary Institute
Trustee / EHF
Director



ANDREW HOPPIN
Hillary Institute
Trustee / EHF
Director



CAMIA YOUNG
Hillary Institute
Trustee / EHF
Director



IAN SHORT
Hillary Institute
Trustee / EHF
Director



DINNIE MOEAHU
Hillary Institute
Trustee / EHF
Director

Sacha McMeeking stepped down from the Board on 31 March 2023.

KAITIAKI/GUARDIAN



MARK PRAIN
Institute Founder

MANAGEMENT



ROSALIE NELSON
Chief Executive, Hillary Institute and EHF

THE UNDERPINNING TEAM

The Hillary Institute and EHF is underpinned by a passionate core team, with specialist support and services. Excited about moving both organisations to the next level, the team is committed to recognising and honouring their responsibility as Tangata Tiriti (People of the Treaty) and to model the pioneering spirit and values of Sir Edmund Hillary.

To meet the small but mighty team, visit www.ehf.org/about-ehf

HILLARY INSTITUTE PATRON



RT HON HELEN CLARK

Former Administrator, United Nations Development Programme (UNDP), New York
3 Term Prime Minister of New Zealand (1999–2008)

HILLARY SUMMIT GOVERNORS



Paul Atkins
(NZ)



Jim Armstrong
(US)



Manfred Kets de
Vries (Europe)



Jeremy Leggett
(UK)



Peggy Liu
(China)



Matt Petersen
(US)



Joan Shapiro
(US)



Dr Helen Sykes
(Australia)



Simon Walker
(UK)

The Board, Institute Founder, and Chief Executive would like to thank and respectfully acknowledge the Hillary Institute's Patron, financial supporters, and the Hillary Summit Governors. We also pay tribute to those who have previously served as Governors and Trustees.

FOUNDING INVESTOR

Jan Cameron

RETIRED GOVERNORS

Anake Goodall (NZ), Former Chair

Hon David Caygill (NZ),
Founding Chair

Ta (Sir) Mark Solomon (NZ – Ngāi Tahu), Founding Governor

Paul Hawken (US),
Founding Governor

Kevin Roberts (US/NZ),
Former Governor

IN MEMORIAM

Bridget Cullerton (Belize),
Founding Governor

Ray Anderson (US),
Founding Governor

Dr. Rajendra Pachauri (India),
Founding Governor

Christopher Doig (NZ),
Founding Trustee

The Hillary Institute and EHF Community of remarkable individuals from around the world.

HILLARY LAUREATES



2009
Jeremy Leggett
(UK)



2010
Peggy Liu
(China)



2011
Aimée
Christensen
(US)



2012
Te Beretitenti
(President)
Anote Tong
(Kiribati)



2013
Atossa Soltani
(Amazon Watch)



2014
Mike Brune
(US)



2016
Tim Jackson
(UK)



2017
Johan
Rockström
(Sweden)



2018
Meagan Fallone
(India)



2020
Christiana
Figueres
(Costa Rica)



2022
Vanessa Nakate
(Uganda)

EHF FELLOWS

The Edmund Hillary Fellowship (EHF) consists of more than 500 innovators, technologists, creatives, investors, entrepreneurs, educators, and systems designers, committed to Aotearoa NZ as a basecamp for global impact.

From more than 50 different countries, Fellows span a range of high-value sectors seeking to make a meaningful impact in Aotearoa NZ with projects, ventures and system-change with global application – from climate change to social inequities to business growth and productivity.

THE HILLARY INSTITUTE OF INTERNATIONAL LEADERSHIP

Recognising, rewarding and nurturing great leadership, the Hillary Institute's purpose is to recognise transformative leaders mid-career that are making outstanding contributions towards improving the human condition.

The Hillary Institute is a charitable trust, launched on 22 January 2007. It is the 100% shareholder of the Edmund Hillary Fellowship (EHF), a not-for-profit limited liability company with charitable status.

The Hillary Institute was founded by Mark Prain, launched by Sir Edmund Hillary, with the Rt Hon Helen Clark, former Prime Minister for Aotearoa NZ, as Patron, and David Caygill, former cabinet minister, as the founding Board Chair.

Charities Number: CC38369

Contact: leaders@hillaryinstitute.org.nz

Visit: www.hillaryinstitute.com



THE EDMUND HILLARY FELLOWSHIP

The Edmund Hillary Fellowship (EHF) was established as a social enterprise to have a positive impact on the world, supporting and advancing the purposes of its parent organisation, the Hillary Institute, with a focus on Aotearoa NZ inspiring global leadership and solutions for future generations and anchored in the principles of Te Tiriti o Waitangi (the Treaty of Waitangi).

In March 2022, EHF became a limited liability company with charitable status. EHF was established in partnership with Immigration NZ to run a pilot Global Impact Visa programme to attract visionary entrepreneurs, investors and systems designers to create positive global impact from New Zealand.

Charities Number: CC60107

Registration Number: 6112633

Contact: team@ehf.org

Visit: www.ehf.org



FURTHER INFORMATION

A digital version of this Annual Report 2022/23 can be found at www.hillaryinstitute.com and www.ehf.org along with the accompanying Financial Statements for 2022/23 (audited by Moore Markhams).

The Hillary Institute and EHF team are deeply appreciative of EHF Fellow Joseph Michael for his generosity in providing some of the stunning scenic imagery used within this report. Ngā mihi nui, Joseph. Explore more of Joseph Michael's extraordinary imagery at www.joemichael.co.nz.



www.hillaryinstitute.com



www.ehf.org